

# **Biomat Professional 7000MX**



## **Biomat 7000mx technology**

## **NASA technology in the Richway Biomat**

The ability of mineral oxides to generate infrared ray waves was discovered by NASA. The Biomat technology harnesses specific minerals, fabrics and ceramics to convert energy into beneficial infrared ray waves. The Biomat's advanced technological materials also emit negative ions that energize and refresh the human body.

**<https://thebiomatshop.com/richway-amethyst-biomat/>**

**<https://richwayandfujibio.com/products/#biomat>**

# The Healing Power of the Amethyst Biomat

The healing benefits of the Richway Amethyst Biomat include:

**Arthritis relief:** Biomat users experience soothing temporary relief of joint pain associated with arthritis.

**Eases minor joint pain and stiffness:** the deep penetrating warmth offers long lasting relief for joint pain and stiffness.

**Reduced stress and fatigue:** gentle warmth and relaxing negative ions soothe tense muscles and relax stressed minds. The Biomat will leave you feeling rejuvenated and rested, restored in body and mind.

**Skin vitalization:** the Biomat aids skin and cellular detoxification through sweating and improved circulation. Improved circulation improves the body's ability to nourish the skin.

**Soothing pain relief:** deep heat soothes aching joints, increases circulation and helps to deliver oxygen-rich blood to oxygen-depleted muscles so they recover faster. Injuries and aching muscles recover much faster with just a short session on the Biomat.

**Improved circulation:** the deep penetrating infrared heat warms the body and forces the heart to work harder pumping blood to boost circulation.

**Promotes restful sleep:** for those with occasional sleeplessness. The pain relief that many Biomat users experience allows them a deeper, more restful sleep.

**Increased tissue oxygen:** the Biomat increases circulation to the areas where applied.

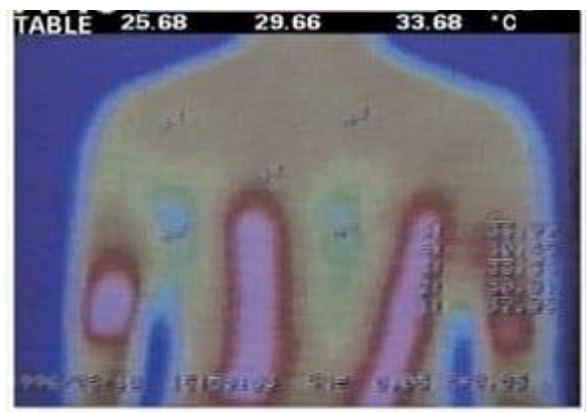
**Minor muscular back pain:** the soothing heat relaxes muscles and can relieve minor muscular back pain.

**Supports the immune system:** penetrates deep into the body and raises internal body temperatures which act similar to a fever which strengthens your immune system. Elimination of toxins and cellular through sweating improve your overall health and resistance to disease.

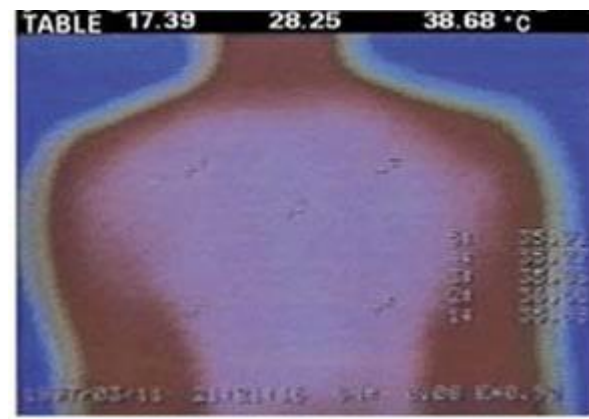
**Soothes and relaxes:** regular use of the Biomat will sooth and relax your body and mind.

## Comparisons of normal heat and Biomat infrared rays

Normal heating pads do not use far infrared technology and do not provide the same type of deep healing benefits that the Biomat offers. Infrared technology will be at the forefront of 21st century healing research due to the healing reactions caused by inducing artificial fevers. The Biomat is a truly innovative healing device!



After using a conventional heating pad for 10 minutes, only the outer surface of the skin has been affected.



After 5 minutes of using Biomat far infrared rays, the far infrared rays have penetrated deeply.



## Richway Amethyst Biomat and the Healing Power of Far Infrared

Infrared rays provide a deep penetrating warmth and help to relax tense muscles. The infrared rays in the Amethyst Biomat are the same rays that are found in warming sunshine. The deep warmth of the infrared soothes aching joints and muscles.

The Biomat 7000MX can also raise the internal body temperature, helping to stimulate the immune system. Long sessions on the mat can induce a toxin-eliminating sweat. Your overall health, vitality and resistance to disease will be strengthened.

The gentle warmth of infrared has been described as deeply nourishing and relaxing, and can soothe stress and knotted muscles. You will feel rejuvenated and renewed, calm in body and mind.

# The Ancient Wisdom of Amethyst

Amethyst healing has been associated with an art and practice, done on a metaphysical level that has been rediscovered because of the power of the Earth's energies that have been absorbed by these sacred objects. In turn, they inherit vital healing powers. Some believe that amethyst has physical, spiritual, calming and zodiacal powers that can be used to calm the mind, body and spirit.



Amethyst has come to be known as a power crystal associated with prolific healing powers that can be characterized as purifying, pacifying and transitional. Amethyst has the ability to transform lower energies into higher ones, and acts as a healer on all levels of mind, body and spirit. The healing powers of Amethyst date back as far as the ancient Greeks who believed that Amethyst protected a person from the intoxicating effects of alcohol. The word "Amethyst" is of Greek origin, and is translated as – "Amethystus" intoxicated ("methystos" from "methyein" or intoxicated, "methy" = wine).

Some other qualities it is believed to have are:

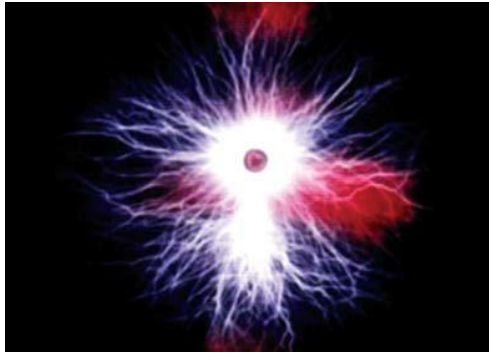
- To calm emotions and reduce stress
- To increase physical energy
- To increase stamina

# Tourmaline

Tourmalines are abundant, complex boron and aluminum silicate minerals of variable composition. Tourmaline comes in a wide range of colors, depending on its mineral composition, with black being the most common. Concentric color zoning often occurs as well. The colored varieties, when transparent and flawless, are cut as gems. In addition to its use as a gem, tourmaline is employed in pressure devices because of its piezoelectric properties.

Tourmaline forms slender 3, 6, or 9-sided prismatic crystals (hexagonal system) in parallel or radiation groups, which causes it to develop an electrical charge when heated or deformed. Pieces cut perpendicular to the long axis can polarize light, and a pair of these plates form a very simple polarizing apparatus known as tourmaline tongs.





## **Life Giving Negative Ions**

Tourmaline generates negative ions. Negative ions are found in abundance in forests and around waterfalls. There is a reason that people enjoy these natural environments! These negative ions produce biochemical reactions in the body that improve overall wellbeing.

## **Improved Circulation with Biomat Use**

Images show poor circulation before (left image) and after 14 days of Biomat use (right image). Note the increase in circulation in the image on the right.

When the body is warm, metabolism rises, blood circulation increases. The circulation of the blood can be likened to the work of a fleet of trucks, some that bring in fresh food and others that take away the trash. The heat from internal organs provides the energy, the heart provides the delivery.

Learn also about [Richway Orgone Biomat](#). This luxurious mattress topper comes in various sizes to perfectly fit your bed. Place the Orgone Biomat on top of your bed, under the top sheet, and enjoy deep, rejuvenating, healing sleep that will change the way you experience your everyday.

# FDA

**Approved  
Medical Device  
510(K) Number  
K072534**

## **An FDA Approved Medical Breakthrough**

The Richway Biomat is approved by the FDA for the following claims. The 510K indications for use states: “Temporary relief of minor muscle pain, minor joint pain and stiffness, joint pain associated with arthritis, muscle spasms, minor sprains, minor strains, minor muscular back pain, relaxation of muscles and temporary increase of local circulation where applied.” No other infrared mat on the market has FDA medical device approval or the certification levels of the Richway Amethyst Biomat. Your health and safety are the top priorities of Richway and Fuji Bio. Don't risk getting injured by an imitation or poor quality infrared mat. US FDA Medical Device 510K Number : K072534



# Exploring the Differences: Richway Amethyst Biomat vs Traditional Infrared Saunas

A couple of options are available in the market regarding how to get far infrared heat therapy. One is infrared therapy pads, or mats, like the Richway Amethyst Biomat 7000mx. The other option is an infrared sauna. While both offer various health benefits, today we will explore how the Biomat has key advantages over an infrared sauna.



## Targeted Heat Therapy

While infrared saunas provide a general heat experience, the Richway Amethyst Biomat infrared heating pad offers targeted heat therapy. It utilizes [far infrared rays](#) and negative ions, which penetrate deep into the body, promoting relaxation and providing relief to specific areas. This targeted approach allows for a more effective, personalized experience and a quicker healing process.

## Infrared Heat Penetration

Infrared saunas work by generating far infrared rays from the walls or ceiling which are typically at least a few inches away from the body while using them. Biomats are made to be laid on or to have against the body for deep penetration. The use of amethyst elongates and strengthens the far infrared rays so that they penetrate 6-8 inches into the entire body, giving infrared healing to much more of the body than the two-inch penetration infrared saunas provide.

## Amethyst Crystal Technology

One unique feature of the Richway Amethyst Biomat is its use of [amethyst crystals](#). These crystals have been known for their healing properties since ancient times. The ancient Greeks and Romans used them to get rid of headaches, toothaches, and hangovers by wearing them on necklaces. Little did they know they were receiving targeted far infrared therapy. The mat's incorporation of amethyst crystals enhances the therapeutic benefits because the far infrared rays are elongated and strengthened and because the frequency is modulated by the amethyst crystals, which amplifies the bio-availability of the infrared light and also strengthens and elongates the rays so that they give maximum [health benefits](#).

## Negative Ion Therapy

Unlike infrared saunas, the Richway Amethyst Biomat produces [negative ions](#). So you get two therapies for the price of one. This negative ion technology improves mood, alleviates depression, quickens cellular communication, acts as an antioxidant in the body, and helps oxygenate the blood. The negative ions generated by the Biomat stimulate serotonin and enter the body through conduction. The only way to produce negative ions in an infrared sauna is to pour water over hot rocks but it will not produce as many.

## Safety and EMF Protection

The Richway Amethyst Biomat has built-in safety features such as an automatic shut-off function, ensuring a worry-free experience. The head portion of full-length Biomats does not put out infrared heat when you lie on one. It is recommended to either use the Amethyst & Tourmaline Pillow made by Richway or an all-natural fiber pillow and place it at the head of the infrared heating pad. This keeps the head cool while the body warms from the inside out from radiant heat. This allows you to take higher sauna-like temperatures more comfortably and avoid heating the grey matter of the brain. In an actual infrared sauna, the entire head is exposed to extreme temperatures.

A lot of infrared saunas use "low EMF" as a selling point, essentially admitting that there is little or no EMF protection built in. Biomats come with multiple EMF blockers that address these harmful waves. The controller, made by Texas Instruments, diverts harmful electromagnetic fields (EMF) before they ever get to the mat itself. Also, three layers of the [17-layer construction](#) help with added EMF protection, and have been tested with high-end EMF detectors and they all read zero when it comes to EMF radiation.

## Enhanced Blood Circulation

The Richway Amethyst Biomat's far-infrared rays stimulate blood circulation, promoting oxygenation and nutrient delivery throughout the body. This improved blood flow can help alleviate muscle soreness, reduce inflammation, facilitate detoxification, quicken healing, and enhance overall well-being. Infrared saunas may offer some circulation benefits, but the targeted approach of the Amethyst Biomat ensures maximum efficiency. All but the most costly (approximately \$7,000) far infrared saunas are FDA-approved, but their approval is limited to the materials they use or that it is a medical device and not for specific health issues. The Richway Biomat is actually an FDA-approved infrared device for improved circulation where applied, as well as for being a medical device.

## Detoxification

Sweating is a natural way for the body to eliminate toxins. The Richway Amethyst Biomat's far-infrared rays can induce a deep, detoxifying sweat, helping to rid the body of harmful substances. This detoxification process can support the immune system, improve skin health, and leave you feeling refreshed. Infrared saunas may induce sweating as well, but the Biomat's targeted heat therapy enhances the detoxification process a lot deeper into the body, detoxifying internal organs at a cellular level that infrared saunas can't reach.

The Orange settings on the Biomat controller are for a sauna-like experience. Ironically, the sauna sessions on this infrared heating pad are much more "sauna-like" than most infrared saunas. Learn more about [How to Use the Biomat](#).

## **Proximity, Comfort, and Achieving Health Goals**

With the Richway Amethyst Biomat, you can lay on it, sit on it, and you can even wrap a Mini Biomat around your waist or sit with it in an office chair so that the mat is directly on your back while you work. In an infrared sauna, you must either sit down or stand up. This makes Biomats much more likely to provide relaxation, pain relief, and all of the other goals people wish to achieve with infrared therapy.

It also makes it much more likely that it will be used on a consistent basis, the key to just about any therapy. It has been shown with infrared heat therapy that the more consistently it is experienced, the more long-term, permanent benefits are achieved. Ease of use and portability make it much more likely that an infrared heating pad gets used more frequently than an infrared sauna, which the user must set time aside for.

Being so close to the therapy itself, it is no wonder that better results are achieved with Richway Amethyst Biomats over infrared saunas. The infrared therapy is literally right up against your body, unlike an infrared sauna. The strength and length of the far infrared rays coming off of a Biomat, which can penetrate 6-8 inches into the body, cannot be compared to those of an infrared sauna which only penetrate the human body on average up to 2 inches. Also, you can sleep on mats so you don't have to make time to use them. That's the problem with infrared saunas. People get them and over time, stop using them due to having to set time aside to enjoy them. You don't have to lock yourself in a box to use an infrared heating pad. Anything you can do sitting or lying down can be done while you enjoy infrared therapy.

Another unique feature of the Biomat is that it produces a 100 milligauss magnetic field to assist circulation in the body. And yet another is its ability to raise core body temperature, rather than just warming the air like infrared saunas.

## **Customizable Settings**

The Biomat allows users to adjust the temperature and intensity of the far-infrared rays according to their preferences. The Biomat's computerized control panel has multiple temperature settings. This customization ensures a comfortable and

personalized experience. Infrared saunas typically have a fixed temperature, limiting the ability to tailor the session to individual needs.

## Portability and Affordability

Unlike infrared saunas, which can be bulky and expensive, Richway Amethyst Biomats offers a more portable and affordable option and doesn't require the space commitment of saunas. Its compact design allows for easy storage and transportation, making it accessible to a wider range of individuals. Both the [Biomat Mini](#) (\$780) and Biomats Professional are made to be portable, coming with hard-shell cases for travel. An infrared sauna must become a permanent fixture in the house and take up much more space.

The [Biomats Professional](#) is \$1950.00 fits on a massage table and is the very best far infrared therapy mat on the market. Cheap, lower-end saunas start at \$1999.00, but to get a top-tier model, the cost is thousands more. The Biomats also consumes less energy, costing less to use over time.

## FDA Approval

There are some far infrared saunas that have FDA approval as medical devices just like the Amethyst Biomats, however, those saunas average \$7,000.00. The approval they have, however, is limited to the types of materials they use or that they are medical devices and not for specific health issues.

The Amethyst Biomats is FDA-approved for temporary relief of minor muscle pain, joint pain, stiffness, arthritis-related pain, muscle spasms, sprains, strains, muscular back pain, muscle relaxation, and temporary increase of local circulation.

While infrared saunas have their own set of benefits, the Richway Amethyst Biomats 7000mx surpasses them in various aspects. With targeted heat therapy, amethyst crystal technology, safety features, enhanced blood circulation, detoxification benefits, customizable settings, and portability, the Biomats offers a unique and effective solution for relaxation and well-being. Consider adding the Original Infrared Heating Pad to your self-care routine and experience the difference it can make in your overall health and vitality.